

TERRAIN TAMER E-LOCKER FITTING GUIDE – 2018.

VEHICLE MAKE & MODEL	YEAR	F/R	SUSP	SPLINE	ELOCKER PART #	BEARING KIT PART#	CROWN WHEEL TORQUE	BEARING CAP TORQUE	BACK LASH	COMMENTS	TERRAIN TAMER DIFF LOCKER KIT
TOYOTA											
LANDCRUISER											
40 SERIES	1969-1984	Front	Live	30	A9378	TTEL01	120Nm (89ftlb)	110Nm (81ftlb)	0.15-0.20mm (.006-.008")	Early models will require upgrade to 50mm bearing	A9378-1TT
		Rear	Live	30	A9378	TTEL01	120Nm (89ftlb)	110Nm (81ftlb)	0.15-0.20mm (.006-.008")	Early models will require upgrade to 50mm bearing	A9378-1TT
60 SERIES	1980-1990	Front	Live	30	A9378	TTEL01	120Nm (89ftlb)	110Nm (81ftlb)	0.15-0.20mm (.006-.008")		A9378-1TT
		Rear	Live	30	A9378	TTEL01	120Nm (89ftlb)	110Nm (81ftlb)	0.15-0.20mm (.006-.008")		A9378-1TT
70,71,73,74,75 SERIES	1984-1990	Front	Live	30	A9378	TTEL01	120Nm (89ftlb)	110Nm (81ftlb)	0.15-0.20mm (.006-.008")		A9378-1TT
		Rear	Live	30	A9378	TTEL01	120Nm (89ftlb)	110Nm (81ftlb)	0.15-0.20mm (.006-.008")		A9378-1TT
70, 73, 75 SERIES	1990-1999	Front	Live	30	A9334	TTEL02	95Nm (70ftlb)	95Nm (70ftlb)	0.15-0.25mm (.006-.010")		A9334-2TT
		Rear	Live	30	A9378	TTEL03	120Nm (89ftlb)	110Nm (81ftlb)	0.15-0.20mm (.006-.008")		A9378-3TT
76, 78 79 SERIES	1999-Current	Front	Live	30	A9334	TTEL02	95Nm (70ftlb)	95Nm (70ftlb)	0.15-0.25mm (.006-.010")		A9334-2TT
		Rear	Live	30	A9574	TTEL04	95Nm (70ftlb)	95Nm (70ftlb)	0.15-0.25mm (.006-.010")		A9574-4TT
80 SERIES	1990-1998	Front	Live	30	A9334	TTEL02	95Nm (70ftlb)	95Nm (70ftlb)	0.15-0.25mm (.006-.010")		A9334-2TT
		Rear	Live	30	A9378	TTEL03	120Nm (89ftlb)	110Nm (81ftlb)	0.15-0.20mm (.006-.008")		A9378-3TT
100 SERIES	1998-2006	Front	Indep.	30	A10976	TTEL12	96Nm (71ftlb)	85Nm (63ftlb)	0.13-0.18mm (.005-.007")		A10976-12TT
		Rear	Live	32	A9574	TTEL04	95Nm (70ftlb)	95Nm (70ftlb)	0.15-0.25mm (.006-.010")		A9574-4TT
105 SERIES	1998-2006	Front	Live	30	A9334	TTEL02	95Nm (70ftlb)	95Nm (70ftlb)	0.15-0.25mm (.006-.010")		A9334-2TT
		Rear	Live	32	A9574	TTEL04	95Nm (70ftlb)	95Nm (70ftlb)	0.15-0.25mm (.006-.010")		A9574-4TT
200 SERIES	2007-2015	Front	Indep.	34	A11092	TTEL13	135Nm (100ftlb)		0.15-0.25mm (.006-.010")		A11092-13TT
		Rear	Live	32	A9574	TTEL04	95Nm (70ftlb)	95Nm (70ftlb)	0.15-0.25mm (.006-.010")		A9574-4TT
LANDCRUISER / PRADO											
90 SERIES	1996-2002	Front	Indep.	27	A11167	TTEL06	96Nm (71ftlb)	85Nm (63ftlb)	0.13-0.18mm (.005-.007")	Some light grinding may be required to clear electromagnet	A11167-6TT
		Rear	Live	30	A9334	TTEL07	95Nm (70ftlb)	95Nm (70ftlb)	0.15-0.25mm (.006-.010")		A9334-7TT
120 SERIES	2002-2009	Front	Indep.	30	A10994	TTEL09	95Nm (70ftlb)		0.15-0.25mm (.006-.010")	3.73 & Down ratio may require grinding in housing to seat electromagnet	A10994-9TT
					A11110		95Nm (70ftlb)		0.15-0.25mm (.006-.010")	3.93 & Up ratio may require grinding in housing to seat electromagnet	A11110-9TT
		Rear	Live	30	A9334	TTEL14	95Nm (70ftlb)	95Nm (70ftlb)	0.15-0.25mm (.006-.010")		A9334-14TT
150 SERIES	2009-Current	Front	Indep.	30	A11110	TTEL09	95Nm (70ftlb)		0.15-0.25mm (.006-.010")	Ratio 3.93 & Up diesel may require grinding in housing to seat electromagnet	A11110-9TT
					A10994		95Nm (70ftlb)		0.15-0.25mm (.006-.010")	Ratio 3.73 & Down petrol may require grinding in housing to seat electromagnet	A10994-9TT
		Rear	Live	30	A11114	TTEL17	95Nm (70ftlb)	95Nm (70ftlb)	0.15-0.25mm (.006-.010")		A11114-17TT
HILUX / SURF / 4RUNNER											
	2015-2017	Front	Indep.	30	A10994	TTEL09	95Nm (70ftlb)		0.15-0.25mm (.006-.010")	Ratio 3.73 & Down may require grinding in housing to seat electromagnet.	A10994-9TT
					A11110		95Nm (70ftlb)		0.15-0.25mm (.006-.010")	Ratio 3.93 & Up may require grinding in housing to seat electromagnet.	A11110-9TT
	2004-2014	Front	Indep.	30	A10994	TTEL09	95Nm (70ftlb)		0.15-0.25mm (.006-.010")	Ratio 3.73 & Down may require grinding in housing to seat electromagnet suits clamshell housing.	A10994-9TT
					A11110		95Nm (70ftlb)		0.15-0.25mm (.006-.010")	Ratio 3.93 & Up may require grinding in housing to seat electromagnet suits clamshell housing.	A11110-9TT
		Rear	Live	30	A9334	TTEL14				Late model vehicles require bearing upgrade from 45mm to 50mm.	A9334-14TT
	1988-2005	Front	Indep.	27	A11444	TTEL06				Suits 33mm output shaft or manual locking hub suits non clamshell housing.	A11444-6TT
					A11412		96Nm (71ftlb)		0.13-0.18mm (.005-.007")	Suits non clamshell housing.	A11412-6TT
					A11167		96Nm (71ftlb)		0.13-0.18mm (.005-.007")	Suits clamshell housing.	A11167-6TT
		Rear	Live	30	A9334	TTEL07	95Nm (70ftlb)	95Nm (70ftlb)	0.15-0.25mm (.006-.010")		A9334-7TT
	1981-1997	Front	Live	30	A9334	TTEL07	95Nm (70ftlb)	95Nm (70ftlb)	0.15-0.25mm (.006-.010")		A9334-7TT
		Rear	Live	30	A9334	TTEL05	95Nm (70ftlb)	95Nm (70ftlb)	0.15-0.25mm (.006-.010")		A9334-5TT
HIACE											
H100 / H200	1989-2015	Rear	Live	30	A9334	TTEL14	95Nm (70ftlb)	95Nm (70ftlb)	0.15-0.25mm (.006-.010")	Suits 10 bolt crown wheel .	A9334-14TT
FJ CRUISER											
GSJ15	2005-2016	Front	Indep.	30	A10994	TTEL09	95Nm (70ftlb)		0.15-0.25mm (.006-.010")	Ratio 3.73 & Down may require grinding in housing to seat electromagnet will not suit models with oem locker .	A10994-9TT
					A11110	TTEL09	95Nm (70ftlb)		0.15-0.25mm (.006-.010")	Ratio 3.91 & Up may require grinding in housing to seat electromagnet will not suit models with oem locker.	A11110-9TT
		Rear	Live	30	A9334	TTEL14	95Nm (70ftlb)	95Nm (70ftlb)	0.15-0.25mm (.006-.010")	Suits 10 bolt crown wheel will not suit models with oem locker.	A9334-14TT
TACOMA USA											
	1995-2004	Front	Live	27	A11167	TTEL14	96Nm (71ftlb)	85Nm (63ftlb)	0.13-0.18mm (.005-.007")	Suits clamshell housing	A11167-14TT

TERRAIN TAMER E-LOCKER FITTING GUIDE – 2018.

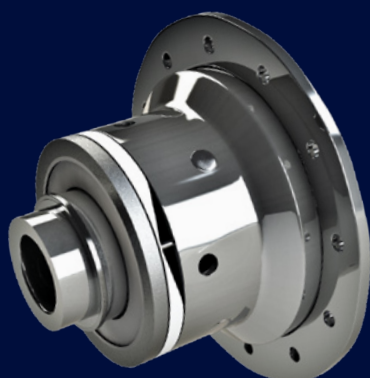
VEHICLE MAKE & MODEL	YEAR	F/R	SUSP	SPLINE	ELOCKER PART #	BEARING KIT PART#	CROWN WHEEL TORQUE	BEARING CAP TORQUE	BACK LASH	COMMENTS	TERRAIN TAMER DIFF LOCKER KIT
		Rear	Live		A13457	TTEL15	96Nm (71ftlb)	85Nm (63ftlb)	0.13-0.18mm (.005-.007")		A13457-15TT
	2005-2015	Front	Live	30	A10994	TTEL15	95Nm (70ftlb)		0.15-0.25mm (.006-.010")	Ratio 3.73 & Down housing may require grinding to seat electro magnet	A10994-15TT
				30	A11110	TTEL16	95Nm (70ftlb)		0.15-0.25mm (.006-.010")	Ratio 3.93 & Up housing may require grinding to seat electro magnet	A11110-16TT
		Rear	Live		A13457	TTEL17	96Nm (71ftlb)	85Nm (63ftlb)	0.13-0.18mm (.005-.007")		A13457-17TT
NISSAN											
PATROL											
GQ Y60-GU Y61	1988-2016	Front	Live	31	A9684	TTEL10	142Nm (105ftlb)	99Nm (73ftlb)	0.15-0.20mm (.006-.008")	Ttel10 will be required to suit 50mm bearing journal up-grade	A9684-10TT
		Rear	Live	33	A9635	TTEL10	142Nm (105ftlb)	99Nm (73ftlb)	0.15-0.20mm (.006-.008")	Will not suit vehicles with oem locker	A9635-10TT
					A13583		142Nm (105ftlb)	99Nm (73ftlb)	0.15-0.20mm (.006-.008")	Replacement for oem locking differential	
				34	A13281		212Nm (156ftlb)	88Nm (55ftlb)	0.15-0.20mm (.006-.008")	Suits h260 housing	
				37	A13092		212Nm (156ftlb)	88Nm (55ftlb)	0.15-0.20mm (.006-.008")		
Y62	2010-Current	Front	Indep.	34	A12539		203Nm (150ftlb)	135Nm (100ftlb)	0.15-0.20mm (.006-.008")	Confirm spline count	
NAVARA											
D21-D22	1986-2016	Front	Indep.	27	A11250	TTEL15	69-78Nm (51-58ftlb)		0.10-0.15mm (.004-.006")	Housing & pinion may require modification	A11250-15TT
		Rear	Live	31	A11257	TTEL16				Ratio 4.11 & Up wheel bearing pre load must be checked post fitment	A11257-16TT
					A13620	TTEL16				Ratio 3.9 & Down wheel bearing pre load must be checked post fitment	A13620-16TT
					A11825	TTEL16				Suits h233b housings	A11825-16TT
D40	2005-Current	Front	Indep.	27	A11120	TTEL20	59Nm (43ftlb) then turn an additional 34-39 degrees	93Nm (69ftlb)	93Nm 0.10-0.15mm (.004-.006")	Ratio 3.69 & Up crown wheel must be fitted prior to electromagnet	A11120-20TT
					A11525		59Nm (43ftlb) then turn an additional 34-39 degrees	93Nm (69ftlb)	93Nm 0.10-0.15mm (.004-.006")	Ratio 3.54 & Down crown wheel must be fitted prior to electromagnet	A11525-20TT
		Rear	Live	32	A11119	TTEL21				Suits 12-bolt crown wheel (thai built. Vin number start with mnt)	A11119-21TT
					A11568					Suits 10-bolt crown wheel (spanish built vin start with vsk)	A11568-21TT
D23 NP300	2014-Current	Front	Indep.	30	A13120		59Nm (43ftlb) then turn an additional 34-39 degrees	93Nm (69ftlb)	93Nm 0.10-0.15mm (.004-.006")	Ratio 3.24 & Down	
					A13684		59Nm (43ftlb) then turn an additional 34-39 degrees	93Nm (69ftlb)	93Nm 0.10-0.15mm (.004-.006")	Ratio 3.69 & Up	
FRONTIER											
D40	2005-Current	Front	Indep.	27	A11120	TTEL20	59Nm (43ftlb) then turn an additional 34-39 degrees	93Nm (69ftlb)	93Nm 0.10-0.15mm (.004-.006")	Ratio 3.69 & Up crown wheel must be fitted prior to electromagnet	A11120-20TT
					A11525		59Nm (43ftlb) then turn an additional 34-39 degrees	93Nm (69ftlb)	93Nm 0.10-0.15mm (.004-.006")	Ratio 3.54 & Down crown wheel must be fitted prior to electromagnet	A11525-20TT
		Rear	Live	32	A11119	TTEL21	198Nm (146ftlb)	108Nm (80ftlb)	.08-.013mm (.003-.005")	Suits 12-bolt crown wheel (thai built. Vin number start with mnt)	A11119-21TT
					A11568		198Nm (146ftlb)	108Nm (80ftlb)	.08-.013mm (.003-.005")	Crown wheel (spanish built vin start with vsk)	A11568-21TT
PATHFINDER											
R50	1995-2005	Front	Indep.	27	A11250	TTEL15	69-78Nm (51-58ftlb)		0.010-0.15mm (.004-.006")	Light grinding will be required on the housing to clear elocker. Ensure there is clearance between pinion head and elocker body. Pinion head can be shaved down slightly to clear.	A11250-15TT
		Rear	Live	33	A9635	TTEL10	142Nm (105ftlb)	99Nm (73ftlb)	0.15-0.20mm (.006-.008")	Ttel10 will be required to suit 50mm bearing journal on elocker will not suit vehicles with rear drum brakes	A9635-10TT
R51	2005-2014	Front	Indep.	27	A11120	TTEL20	59Nm (43ftlb) then turn an additional 34-39 degrees	93Nm (69ftlb)	93Nm (0.10-0.15mm (.004-.006")	Ratio 3.69 & Up crown wheel must be fitted prior to electromagnet	A11120-20TT
					A11525		59Nm (43ftlb) then turn an additional 34-39 degrees	93Nm (69ftlb)	93Nm (0.10-0.15mm (.004-.006")	Ratio 3.54 & Down crown wheel must be fitted prior to electromagnet	A11525-20TT
		Rear	Indep.	33	A12352					Ratio 3.54 & Up	
					A13238					Ratio 3.36 & Down	
TERRANO 2											
R20	1993-2006	Rear	Live	31	A9684	TTEL10	142Nm (105ftlb)	99Nm (73ftlb)	0.15-0.20mm (.006-.008")	P/n# ttel10 will be required to suit 50mm bearing journal up-grade	A9684-10TT
				33	A9635	TTEL10	142Nm (105ftlb)	99Nm (73ftlb)	0.15-0.20mm (.006-.008")	P/n# ttel10 will be required to suit 50mm bearing journal up-grade does not suit models with rear drum brakes	A9635-10TT
FIAT											
FULLBACK	2016 -	Front	Indep.	28	A11425		85Nm (63ftlb)	60Nm (44ftlb)	0.13-0.18mm (.005-.007")	Will not suit 7.25 Crown wheel	
		Rear	Live	31	A11428	TTEL19	152Nm (112ftlb)	60Nm (44ftlb)	0.13-0.18mm (.005-.007")	9.5" Crown wheel	A11428-19TT
FORD											
RANGER											
PJ & PK	2006-2011	Front	Indep.	30	A11474	TTEL23	68-83Nm (51-62ftlb)	73-107Nm (84-79ftlb)	0.09-0.11mm (.0035-.0043")		A11474-23TT

TERRAIN TAMER E-LOCKER FITTING GUIDE – 2018.

VEHICLE MAKE & MODEL	YEAR	F/R	SUSP	SPLINE	ELOCKER PART #	BEARING KIT PART#	CROWN WHEEL TORQUE	BEARING CAP TORQUE	BACK LASH	COMMENTS	TERRAIN TAMER DIFF LOCKER KIT
		Rear	Live	32	A11471	TTEL22	95Nm (70ftlb)	81Nm (60ftlb)	0.15-0.25mm (.006-.010")		A11471-22TT
PX & PX2 (T6)	2011-Current	Front	Indep.	29	A11757	TTEL24	135Nm (100ftlb)		0.35-0.45mm (.013-.017) off Pinion	Bearings can be 2 different sizes so will need to checked upon install	A11757-24TT
PX & PX2 (T6)	2011-Current	Rear	Live	32	A12608	TTEL28	150Nm (110ftlb)	75Nm (55ftlb)	0.15-0.25mm (.006-.010")		A12608-28TT
MAVERICK	1988-1997	Front	Live	31	A9684	TTEL10	142Nm (105ftlb)	99Nm (73ftlb)	0.15-0.20mm (.006-.008")	P/n# ttel10 will be required to suit 50mm bearing journal up-grade.	A9684-10TT
		Rear	Live	33	A9635	TTEL10	142Nm (105ftlb)	99Nm (73ftlb)	0.15-0.20mm (.006-.008")	Does not suit models with rear drum brakes.	A9635-10TT
ISUZU											
DMAX	2008-Current	Front	Indep.	17	A11556	TTEL11	107Nm (79ftlb)	98Nm (72ftlb)	0.15-0.20mm (.006-.008")		A11556-11TT
		Rear	Live	26	A11559	TTEL18	108Nm (80ftlb)	108Nm (80ftlb)	0.15-0.20mm (.006-.008")	Due to isuzu casting differences this may require a different size shim to set the pre-load.	A11559-18TT
MU-X	2014-Current	Front	Indep.	17	A11556	TTEL11	107Nm (79ftlb)	98Nm (72ftlb)	0.15-0.20mm (.006-.008")		A11556-11TT
		Rear	Live	26	A11559	TTEL18	108Nm (80ftlb)	108Nm (80ftlb)	0.15-0.20mm (.006-.008")	Due to isuzu casting differences this may require a different size shim to set the pre-load.	A11559-18TT
FASTER & RODEO TF	1988-2007	Front	Indep.	17	A11556	TTEL11				Does not suit some rodeo's between 12/96 & 5/98 due to a different 3rd member and carrier. To get it to fit you can swap member out for an earlier one.	A11556-11TT
		Rear	Live	26	A11559	TTEL18				Due to isuzu casting differences this may require a different size shim to set the pre-load.	A11559-18TT
					A12924					Suits vehicles with thrust block centre	
HOLDEN											
COLORADO											
RC	2008-2011	Front	Indep.	17	A11556	TTEL11	107Nm (79ftlb)	98Nm (72ftlb)	0.15-0.20mm (.006-.008")		A11556-11TT
		Rear	Live	26	A11559	TTEL18	108Nm (80ftlb)	108Nm (80ftlb)	0.15-0.20mm (.006-.008")	Due to isuzu casting differences this may require a different size shim to set the pre-load.	A11559-18TT
RG/COLORADO7	2012-Current	Front	Indep.	28	A11887	TTEL25	120Nm (89ftlb)	63Nm (46ftlb) Alum 75Nm (55ftlb) Cast		Pre-load shim & baffle modification see instructions. Im102949 cone & Im102910 cup required.	A11887-25TT
		Rear	Live	30	A12086		108Nm (80ftlb)	108Nm (80ftlb)	0.15-0.20mm (.006-.008")	To suit non thrust block model	
RODEO											
RA, RA7	1988-2007	Front	Indep.	17	A11556	TTEL11	107Nm (79ftlb)	98Nm (72ftlb)	0.15-0.20mm (.006-.008")	Does not suit some rodeo's between 12/96 & 5/98 due to a different 3rd member and carrier. To get it to fit you can swap member out for an earlier one.	A11556-11TT
		Rear	Live	26	A11559	TTEL18	108Nm (80ftlb)	108Nm (80ftlb)	0.15-0.20mm (.006-.008")	Due to isuzu casting differences this may require a different size shim to set the pre-load. Does not suit models 88-02 with thrust block centre	A11559-18TT
					A12924		108Nm (80ftlb)	108Nm (80ftlb)	0.15-0.20mm (.006-.008")	Suits vehicles with thrust block centre 1993-	
JACKAROO											
JACKAROO/UBS	1988-2002	Front	Indep.	17	A11556	TTEL11	107Nm (79ftlb)	98Nm (72ftlb)	0.15-0.20mm (.006-.008")	Does not suit some jackaroo's between 12/96 & 5/98 due to a different 3rd member and carrier. To get it to fit you can swap member out for an earlier one.	A11556-11TT
		Rear	Live	26	A11559	TTEL18	108Nm (80ftlb)	108Nm (80ftlb)	0.15-0.20mm (.006-.008")	Due to holden casting differences this may require a different size shim to set the pre-load.	A11559-18TT
MAZDA											
BT-50	2006-2011	Front	Indep.	30	A11474	TTEL23	68-83Nm (51-62ftlb)	73-107Nm (84-79ftlb)	0.09-0.11mm (.0035-.0043")		A11474-23TT
		Rear	Live	32	A11471	TTEL22	95Nm (70ftlb)	81Nm (60ftlb)	0.15-0.25mm (.006-.010")		A11471-22TT
BT-50	2011-Current	Front	Indep.	29	A11757	TTEL24	135Nm (100ftlb)		0.35-0.45mm (.013-.017) off Pinion	Bearings can be 2 different sizes so will need to checked upon install	A11757-24TT
		Rear	Live	32	A12608	TTEL28	150Nm (110ftlb)	75Nm (55ftlb)	0.15-0.25mm (.006-.010")		A12608-28TT
MITSUBISHI											
CANTER	TBA	Front	Live	16	A13343						
PAJERO											
ND-NL	1987-2000	Front	Indep.	28	A11425		85Nm (63ftlb)	60Nm (44ftlb)	0.13-0.18mm (.005-.007")	Front: will not suit 7.25" Crown wheel	
		Rear	Live	31	A11428	TTEL19	152Nm (112ftlb)	78Nm (58ftlb)	0.13-0.18mm (.005-.007")	9.5" Crown wheel 3.5 V6 & 2.8Td, bearing inner Im603049, outer Im603014	A11428-19TT
		Rear		28	A11970		85Nm (63ftlb)	60Nm (44ftlb)	0.13-0.18mm (.005-.007")	9.0" Crown wheel will not suit 3.5 V6 or 2.8Td	
		Rear			A13105		152Nm (112ftlb)	78Nm (58ftlb)	0.13-0.18mm (.005-.007")	8.0" Crown wheel	
NM-NX	2000-Current	Front	Indep.	28	A11425		85Nm (63ftlb)	60Nm (44ftlb)	0.13-0.18mm (.005-.007")	Front: will not suit 7.25" Crown wheel	
		Rear	Indep.	33	A12425		152Nm (112ftlb)	78Nm (58ftlb)	0.13-0.18mm (.005-.007")	9.5" Crown wheel	
TRITON											
ME-MQ	1988-2002	Front	Indep.	28	A11425		85Nm (63ftlb)	60Nm (44ftlb)	0.13-0.18mm (.005-.007")	Will not suit 7.25 Crown wheel	
		Rear	Live	28	A11970		85Nm (63ftlb)	60Nm (44ftlb)	0.13-0.18mm (.005-.007")	9.0" Crown wheel	
	2002-2016			31	A11428	TTEL19	152Nm (112ftlb)	60Nm (44ftlb)	0.13-0.18mm (.005-.007")	9.5" Crown wheel	A11428-19TT
CHALLENGER/PAJERO SPORT											
PA-QE	1988-2016	Front	Indep.	28	A11425		85Nm (63ftlb)	60Nm (44ftlb)	0.13-0.18mm (.005-.007")	Will not suit 7.25" Crown wheel	
		Rear	Live	31	A11428	TTEL19	152Nm (112ftlb)	60Nm (44ftlb)	0.13-0.18mm (.005-.007")	Suits 9.5" Crown wheel	A11428-19TT
				28	A11970		85Nm (63ftlb)	60Nm (44ftlb)	0.13-0.18mm (.005-.007")	Suits 9.0" Crown wheel	

TERRAIN TAMER E-LOCKER FITTING GUIDE – 2018.

VEHICLE MAKE & MODEL	YEAR	F/R	SUSP	SPLINE	ELOCKER PART #	BEARING KIT PART#	CROWN WHEEL TORQUE	BEARING CAP TORQUE	BACK LASH	COMMENTS	TERRAIN TAMER DIFF LOCKER KIT
					A13105		152Nm (112ftlb)	60Nm (44ftlb)	0.13-0.18mm (.005-.007")	Suits 8.0" Crown wheel	
DELICA											
L300	1986-1996	Front	Indep.	28	A11425		85Nm (63ftlb)	60Nm (44ftlb)	0.13-0.18mm (.005-.007")	Will not suit 7.25" Crown wheel	
		Rear	Live		A13105		152Nm (112ftlb)	60Nm (44ftlb)	0.13-0.18mm (.005-.007")	8.0" Crown wheel	
L400	1994-2007	Front	Indep.		A11425		85Nm (63ftlb)	60Nm (44ftlb)	0.13-0.18mm (.005-.007")	Will not suit 7.25" Crown wheel	
		Rear	Live		A11970		85Nm (63ftlb)	60Nm (44ftlb)	0.13-0.18mm (.005-.007")	9.5" Crown wheel, bearing inner Im603049, outer Im603014	
GREAT WALL											
V240	2006-2016	Rear	Live	30	A12053					Built to order	
JEEP											
WRANGLER/TJ	1997-2006	Front	Live	27	19817		75Nm (55ftlb)	81Nm (60ftlb)	0.15-0.25mm (.006-.010")	3.54 & Down ratio suits dana 30 housing	
					19818		75Nm (55ftlb)	81Nm (60ftlb)	0.15-0.25mm (.006-.010")	3.73 & Up ratio suits dana 30 housing	
		Rear	Live	27	19821		75Nm (55ftlb)	81Nm (60ftlb)	0.15-0.25mm (.006-.010")	3.54 & Up ratio suits dana 35 housing c -clip	
				30	19977		75Nm (55ftlb)	81Nm (60ftlb)	0.15-0.25mm (.006-.010")	Suits dana 44 housing 3.73 & Down ratio	
					19969					Suits dana 44 housing 3.92 Up ratio	
WRANGLER/JK	2006-Current	Front	Live	27	19817		75Nm (55ftlb)	81Nm (60ftlb)	0.15-0.25mm (.006-.010")	3.54 & Down ratio suits dana 30 housing	
					19818		75Nm (55ftlb)	81Nm (60ftlb)	0.15-0.25mm (.006-.010")	3.73 & Up ratio suits dana 30 housing	
		Rear	Live	30	19977		75Nm (55ftlb)	81Nm (60ftlb)	0.15-0.25mm (.006-.010")	Suits dana 44 housing all ratios	
LAND ROVER											
DISCOVERY											
	1993-2004	Front	Live	24	A11301		58Nm (43ftlb)	90Nm (66ftlb)	0.10-0.17mm (.004-.007")	Rover differential	
		Rear			A11301		58Nm (43ftlb)	90Nm (66ftlb)	0.10-0.17mm (.004-.007")	Rover differential	
DEFENDER											
DEFENDER 110, 130, COUNTY	1983-2014	Front	Live	24	A11301		58Nm (43ftlb)	90Nm (66ftlb)	0.10-0.17mm (.004-.007")	Rover differential	
					A11870		136Nm (43ftlb)	134Nm (99ftlb)	0.15-0.25mm (.006-.010")	Ratio 4.10 & Down suits salisbury 8ha housing.	
					A13201		136Nm (43ftlb)	134Nm (99ftlb)	0.10-0.17mm (.004-.007")	Ratio 4.56 & Up suits salisbury 8ha housing	
		Rear	Live	24	A11301		58Nm (43ftlb)	90Nm (66ftlb)	0.10-0.17mm (.004-.007")	Rover differential	
					A11870		136Nm (43ftlb)	134Nm (99ftlb)	0.15-0.25mm (.006-.010")	Ratio 4.10 & Down suits salisbury 8ha housing.	
					A13201		136Nm (43ftlb)	134Nm (99ftlb)	0.10-0.17mm (.004-.007")	Ratio 4.56 & Up suits salisbury 8ha housing	
					A11415		58Nm (43ftlb)	90Nm (66ftlb)	0.10-0.17mm (.004-.007")	Suits p38a housing	
DEFENDER 90	1983-2012	Front	Live	24	A11301		58Nm (43ftlb)	90Nm (66ftlb)	0.10-0.17mm (.004-.007")	Rover differential	
		Rear	Live	24	A11301		58Nm (43ftlb)	90Nm (66ftlb)	0.10-0.17mm (.004-.007")	Rover differential	
PERENTIE 6X6	1987-1993	Front	Indep.	24	A13178	TTEL25	58Nm (43ftlb)	90Nm (66ftlb)	0.10-0.17mm (.004-.007")	4.56 And up ratio	A13178-25TT
		Rear	Live	24	A13201		136Nm (43ftlb)	134Nm (99ftlb)	0.10-0.17mm (.004-.007")	4.56 And up ratio	
RANGE ROVER											
SERIES 1	1970-1996	Front	Live	24	A11301		58Nm (43ftlb)	90Nm (66ftlb)	0.10-0.17mm (.004-.007")	Rover differential	
		Rear	Live	24	A11301		58Nm (43ftlb)	90Nm (66ftlb)	0.10-0.17mm (.004-.007")	Rover differential	
P38A	1993-2016	Front	Live	24	A11415		58Nm (43ftlb)	90Nm (66ftlb)	0.10-0.17mm (.004-.007")	Suits p38a housing	
		Rear	Live	24	A11415		58Nm (43ftlb)	90Nm (66ftlb)	0.10-0.17mm (.004-.007")	Suits p38a housing	
SSANGYONG											
MUSSON/REXTON/KORANDO	1996-2016	Rear	Live	30	19977		75Nm (55ftlb)	81Nm (60ftlb)	0.15-0.25mm (.006-.010")	All ratios	
HYUNDAI											
I800	All	Rear	Live	34	A11199					Built to order	
SUZUKI											
GRAND VITARA	2005 -	Rear	Live		A13558					Requires modifications to housing	



TERRAIN TAMER 4WD PARTS

ISSUE DATE: JUNE 2018